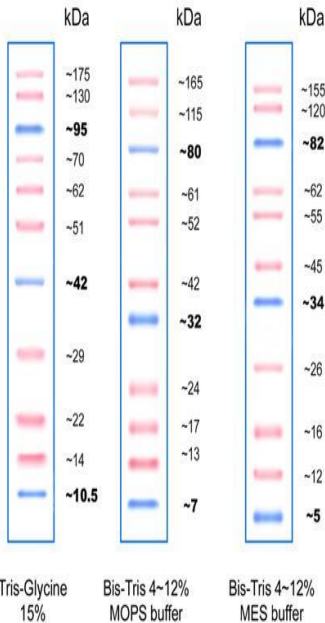




### Protein Marker PS11



#### Description/Preparation:

Protein Marker PS11 contains 11 proteins that resolve into sharp, tight bands in the range of 10-175 kDa. The Protein Ladder allows to monitor molecular weight separation during electrophoresis, estimate molecular weights. The marker is ready-to-use. There is no need to boil. Easy to identify: includes the ~10, ~40 and ~90 kDa reference bands coupled with an blue dye

#### Applications

- Monitoring of protein migration during SDS-polyacrylamide gel electrophoresis.
- Monitoring of protein transfer onto membranes during Western blotting.
- Sizing of proteins on SDS-polyacrylamide gels and Western blots.

#### Usage:

Mini gel application: 5 µl/well; 2.5 µl per well blots  
Standard gel application: 10 µl/well; 5 µl per well for blots

**Number of bands: 11** 10.5, 14, 22, 29, 42, 51, 62, 70, 95, 130, 175 kDa

#### Loading:

Loading Denaturing Polyacrylamide gels (SDS-PAGE):

- Thaw marker at room temperature or heat at 37 – 40 °C for a few minutes. Do not boil!
- Vortex gently to ensure the solution is homogeneous and load the ladder on SDS-polyacrylamide gel
- 5 µl per well for mini-gels, 2.5 µl per well for blots
- 10 µl per well for large gels, 5 µl per well for blots

Apparent molecular weights for SDS-PAGE analysis

Protein Ladder PS11 prestained GeneON	TG	MOPS		MES*	
	15%	12%	4-12%	12%	4-12%
Band 1	~175	~165	~165	~155	~155
Band 2	~130	~115	~115	~120	~120
Band 3	~95	~80	~80	~82	~82
Band 4	~70	~61	~61	~62	~62
Band 5	~62	~52	~52	~55	~55
Band 6	~51	~42	~42	~45	~45
Band 7	~42	~32	~32	~34	~34
Band 8	~29	~24	~24	~26	~26
Band 9	~22	~17	~17	~16	~16
Band 10	~14	~13	~13	~12	~12
Band 11	~10.5	~7	~7	~5	~5

\* MES buffer compatible

1 ml marker is sufficient for 200 mini gels or 100 standard gels. It is recommended to divide the marker into aliquots to avoid contamination of the stock solution.

#### Note:

Protein Marker PS11 is optimized for runs on 15 % SDS polyacrylamide gels. 4 to 12 % gels may cause proteins with low molecular weights to migrate with the dye front. On 12 to 15 % and gradient gels all bands are visible.

#### Quality Control

Tested in SDS-polyacrylamide gel electrophoresis and Western blotting.

**Storage:** at -20°C

**Shipment:** on blue ice

**Ordering information:**

Cat.-no	Description	Amount
310005	Protein Marker PS101 (11 - 175 kDa)	1 x 500 µl
310006	Protein Marker PS11 (11 - 175 kDa)	5 x 500 µl

*... a good decision ..*

GeneON .. a good decision ..

Contact Phone +49-(0)-621- 5720 864 Fax: +49-(0)-621-5724 462

E-Mail: [mailto:info@geneon.net](mailto:mailto:info@geneon.net) WEB: <http://www.taq-dna.com/> Version: 25.10.2009 AS

Unless specified otherwise, all products of GeneON are sold for research use only.